

599350 599400 599450 599500 599550 599600 599650 599700 599750 599800

6154100  
6154050  
6154000  
6153950  
6153900  
6153850

6154100  
6154050  
6154000  
6153950

599350 599400 599450 599500 599550 599600 599650 599700 599750

**G3**  
16.0

**G2**  
19.9

**G1**  
22.9

**B**  
23.2

**G4**  
24.7

**G5**  
28.2

36.5

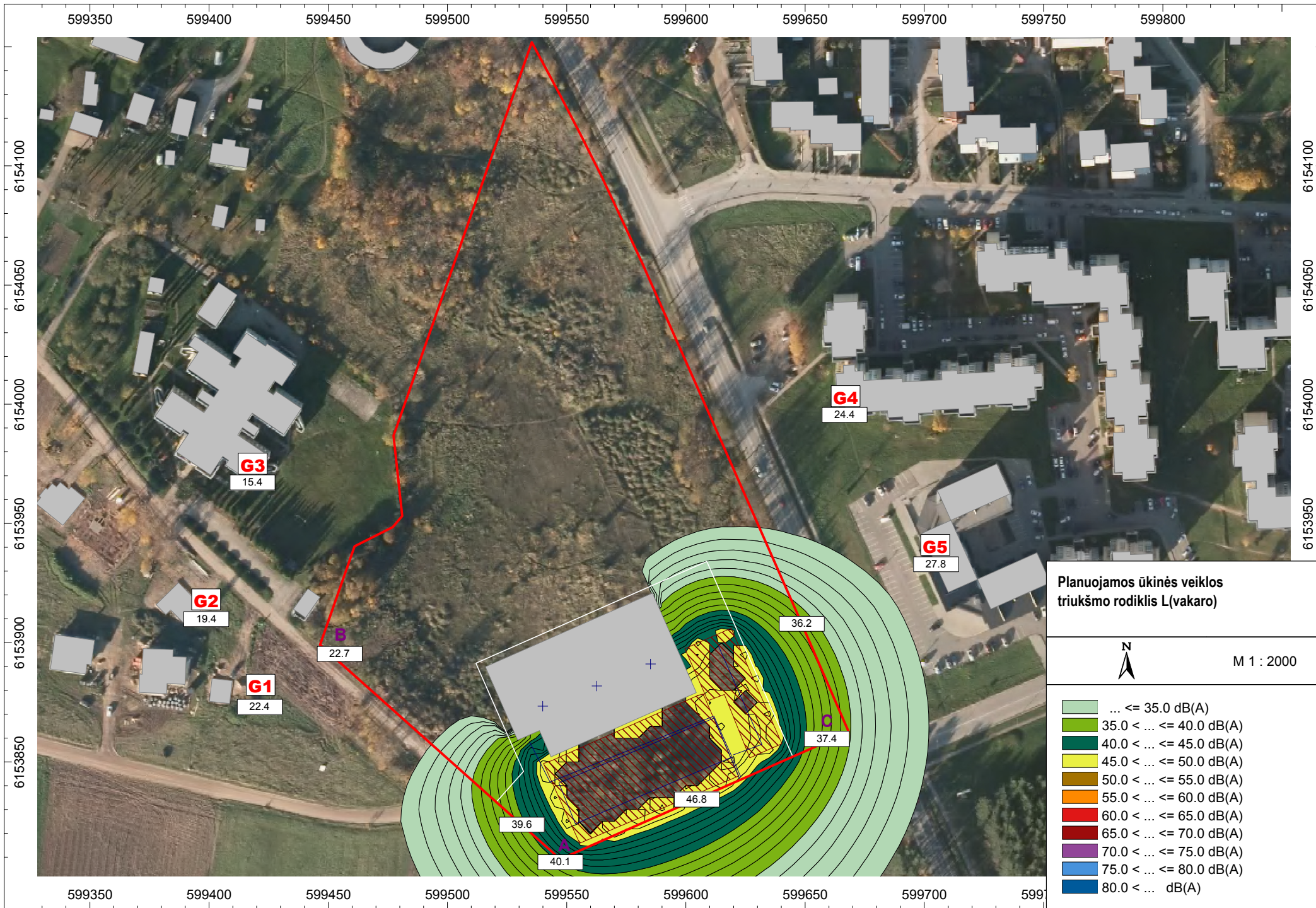
**C**  
37.7

40.0

40.4

47.1





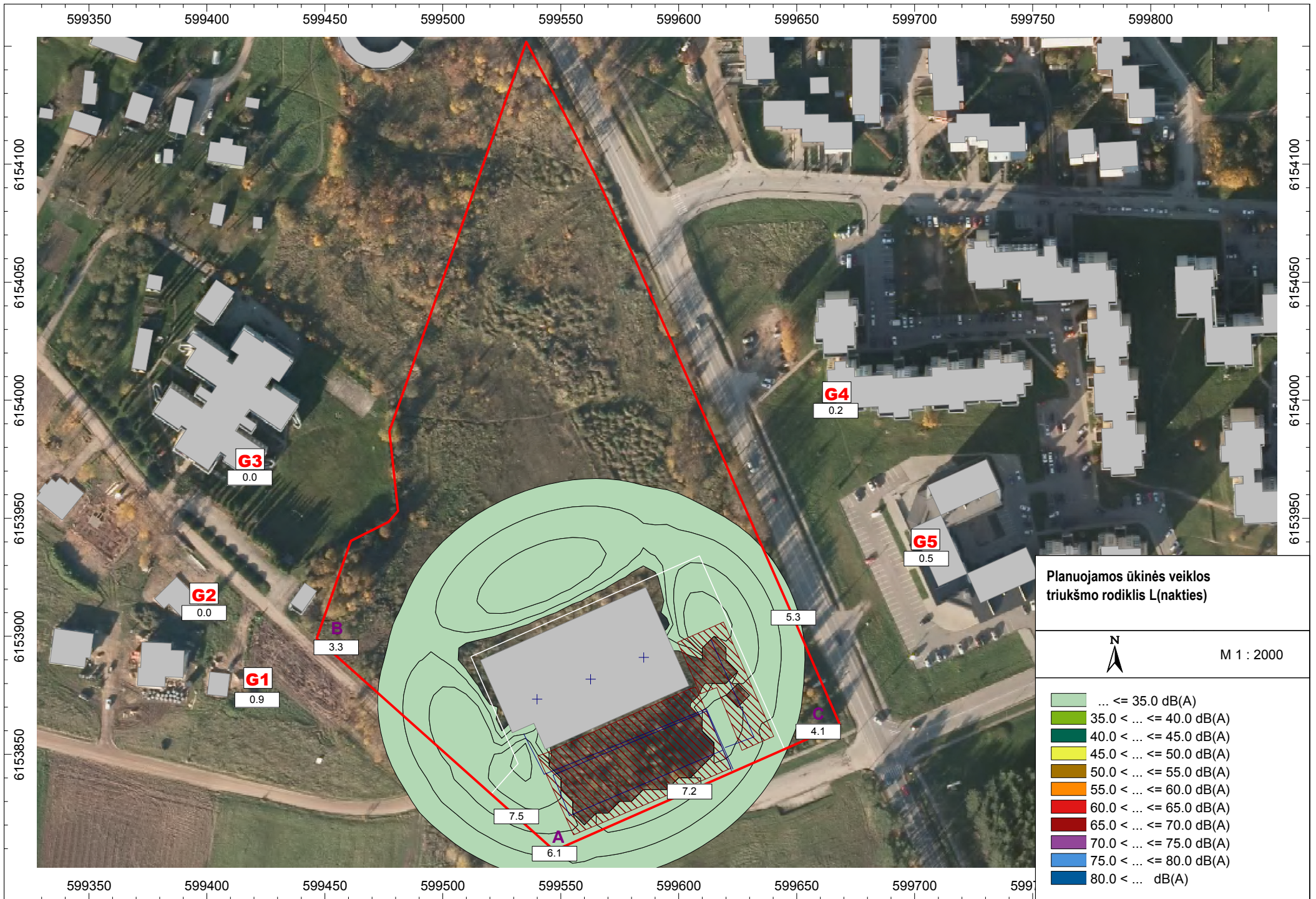
**Planuojamos ūkinės veiklos triukšmo rodiklis L(vakaro)**



M 1 : 2000

- ... ≤ 35.0 dB(A)
- 35.0 < ... ≤ 40.0 dB(A)
- 40.0 < ... ≤ 45.0 dB(A)
- 45.0 < ... ≤ 50.0 dB(A)
- 50.0 < ... ≤ 55.0 dB(A)
- 55.0 < ... ≤ 60.0 dB(A)
- 60.0 < ... ≤ 65.0 dB(A)
- 65.0 < ... ≤ 70.0 dB(A)
- 70.0 < ... ≤ 75.0 dB(A)
- 75.0 < ... ≤ 80.0 dB(A)
- 80.0 < ... dB(A)





**Planojamos ūkinės veiklos triukšmo rodiklis L(nakties)**



M 1 : 2000

- ... ≤ 35.0 dB(A)
- 35.0 < ... ≤ 40.0 dB(A)
- 40.0 < ... ≤ 45.0 dB(A)
- 45.0 < ... ≤ 50.0 dB(A)
- 50.0 < ... ≤ 55.0 dB(A)
- 55.0 < ... ≤ 60.0 dB(A)
- 60.0 < ... ≤ 65.0 dB(A)
- 65.0 < ... ≤ 70.0 dB(A)
- 70.0 < ... ≤ 75.0 dB(A)
- 75.0 < ... ≤ 80.0 dB(A)
- 80.0 < ... dB(A)